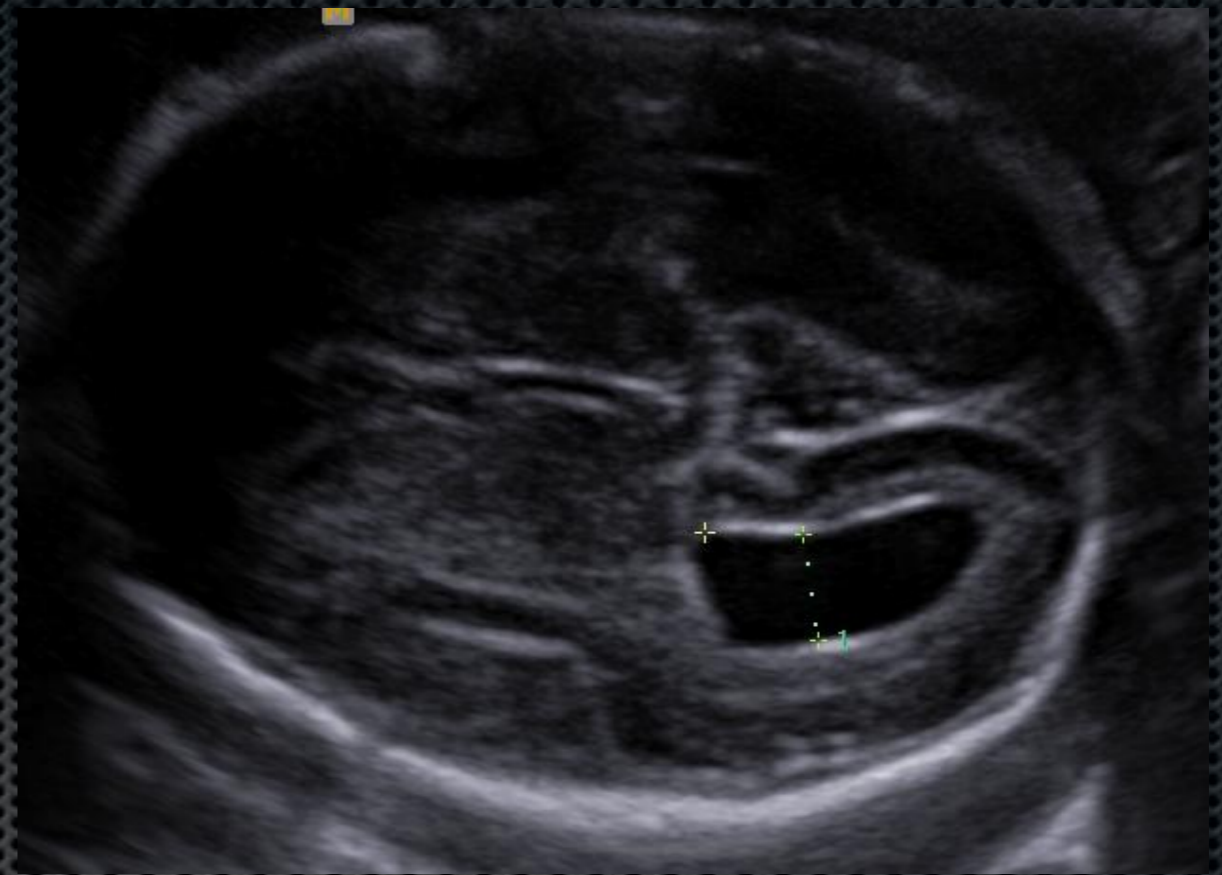
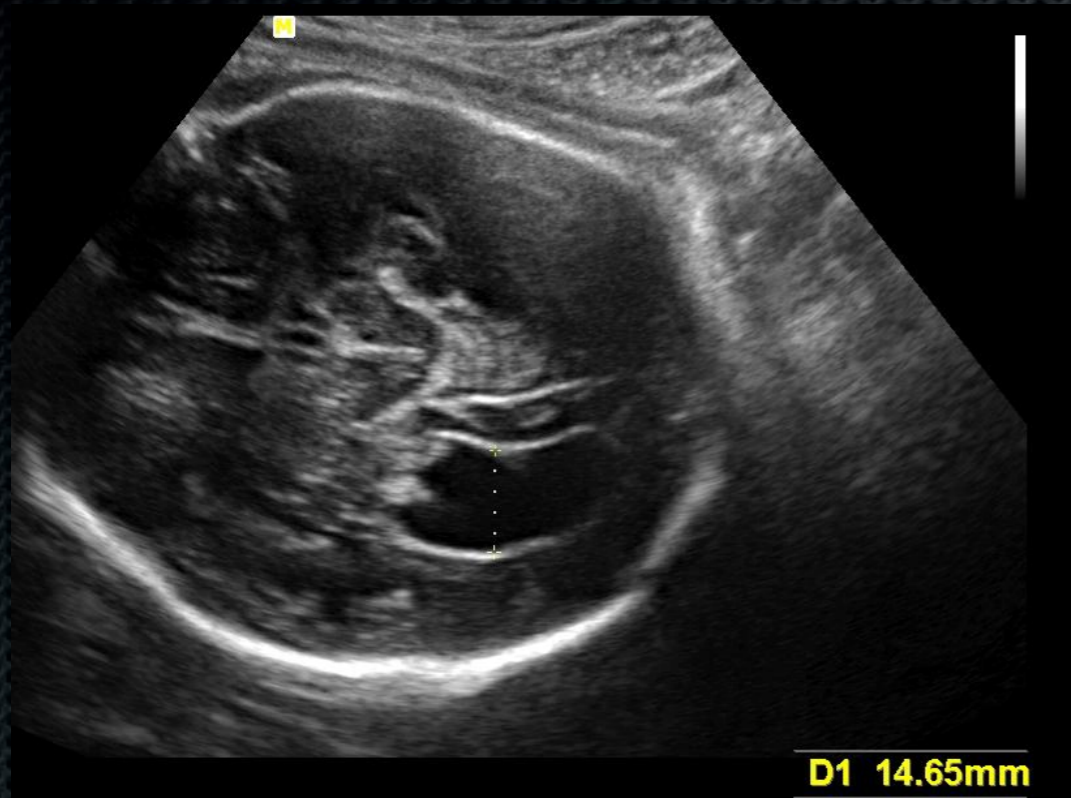
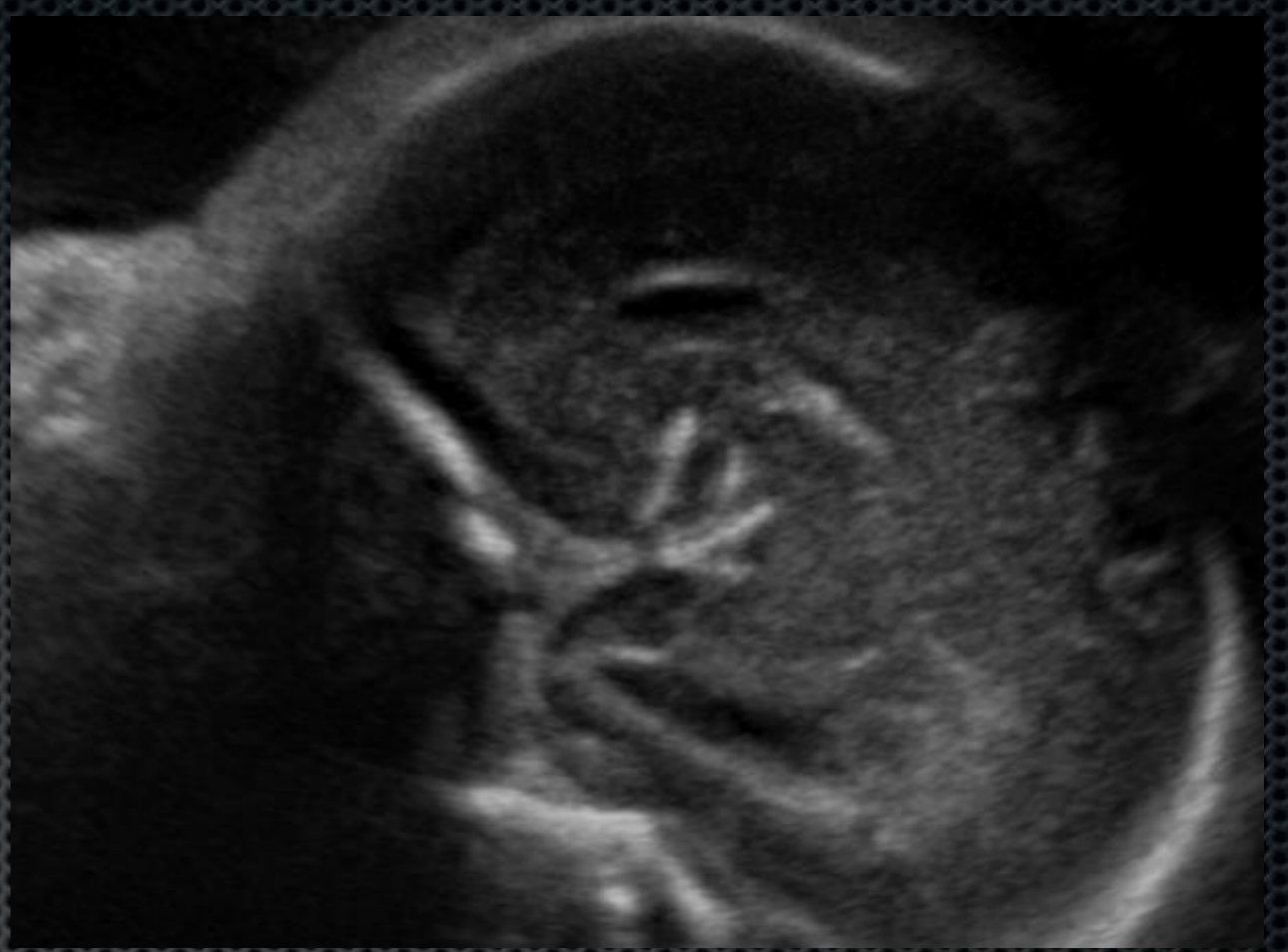
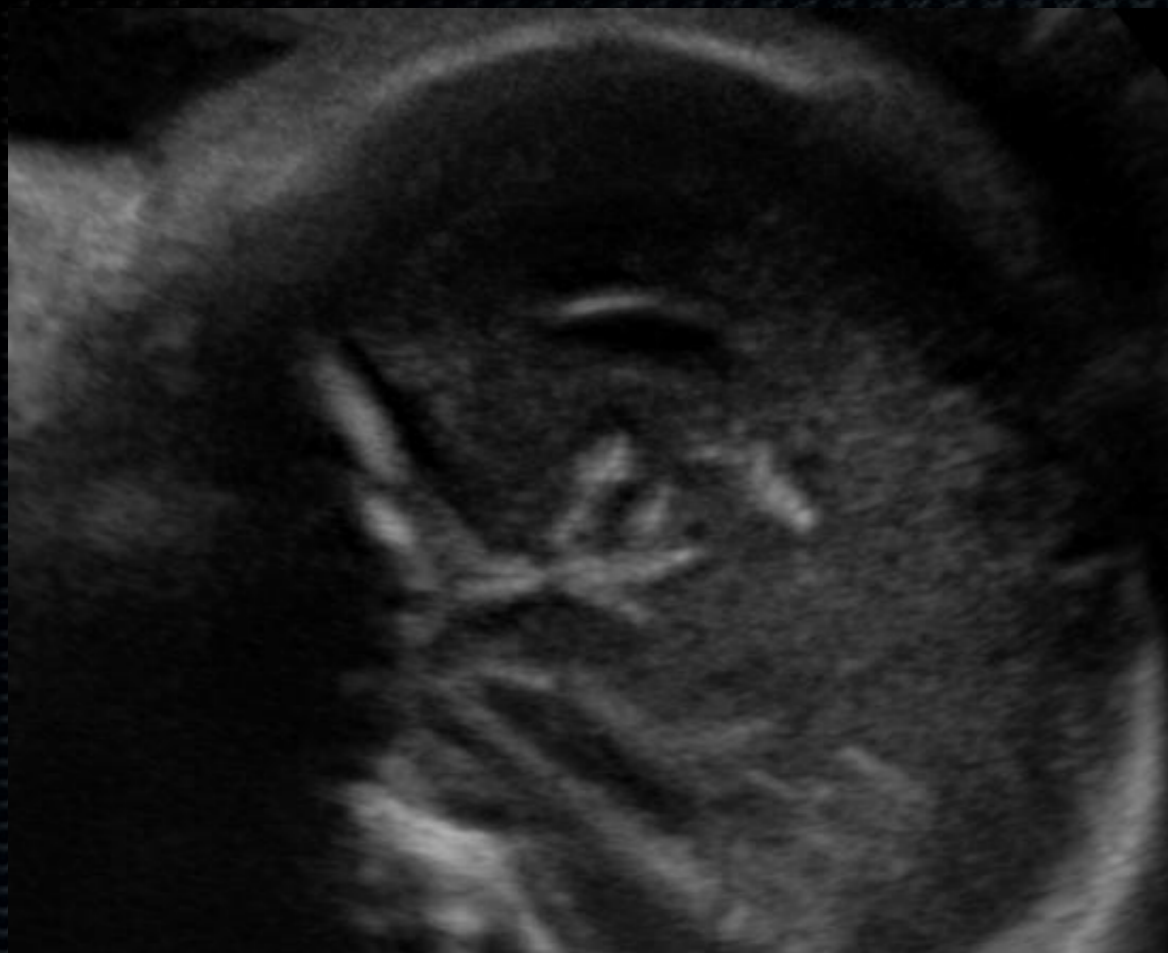


# Nhiễm trùng





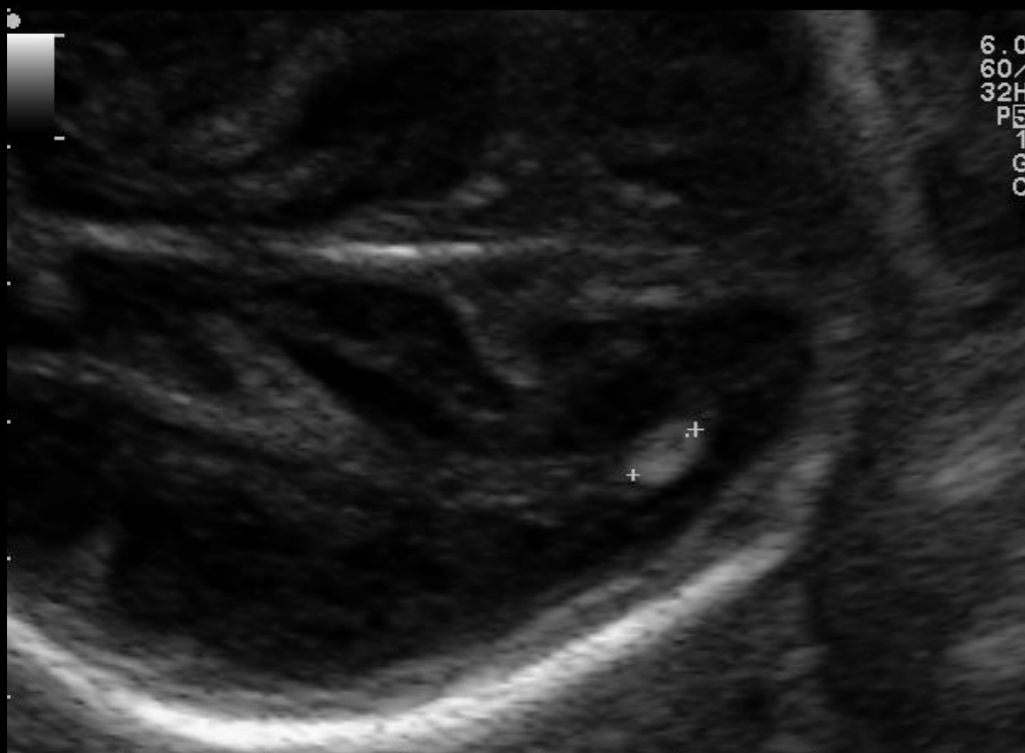
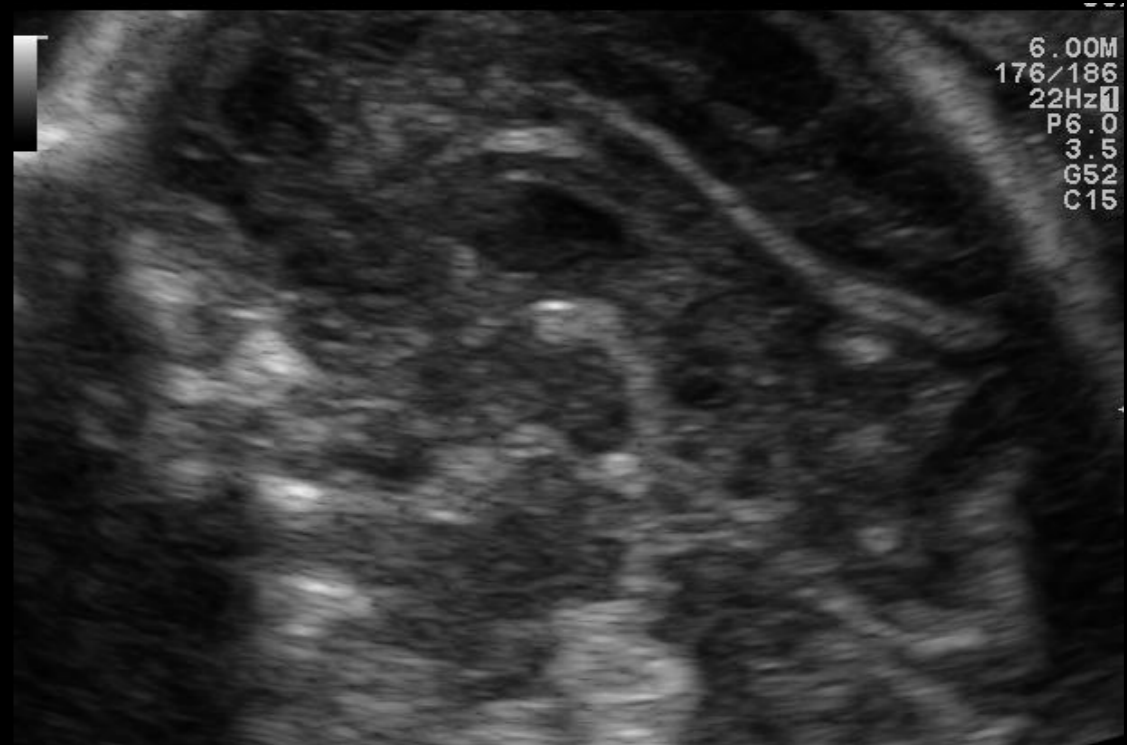
Vôi hóa  
các mạch máu  
Nhân Đậu – thể Vân





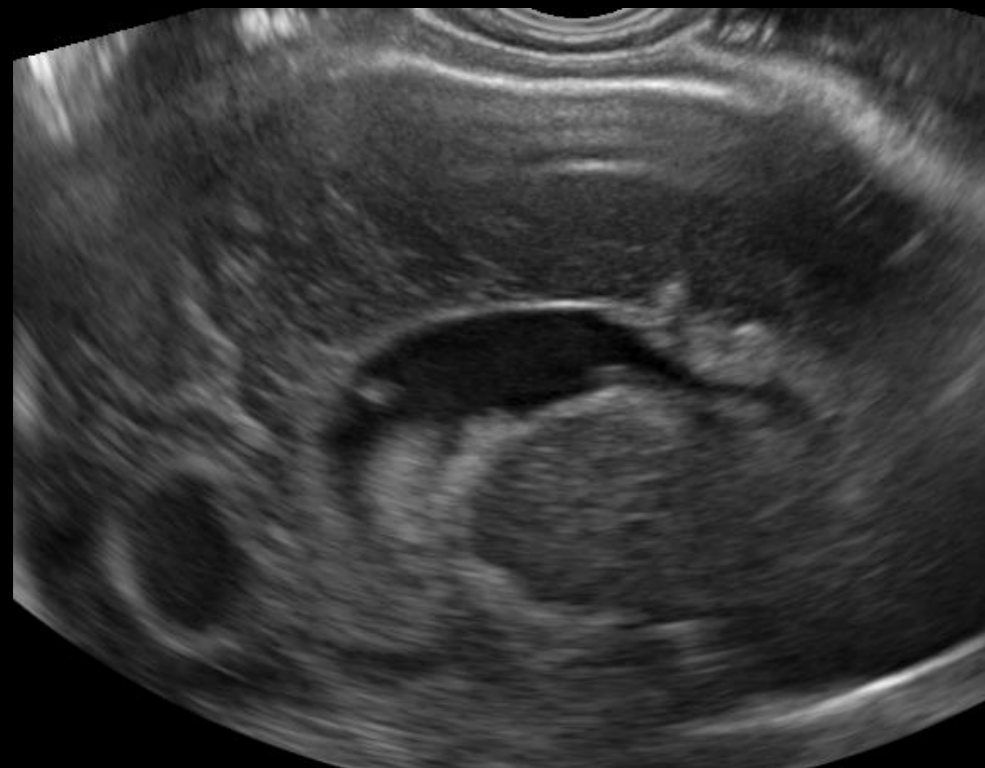
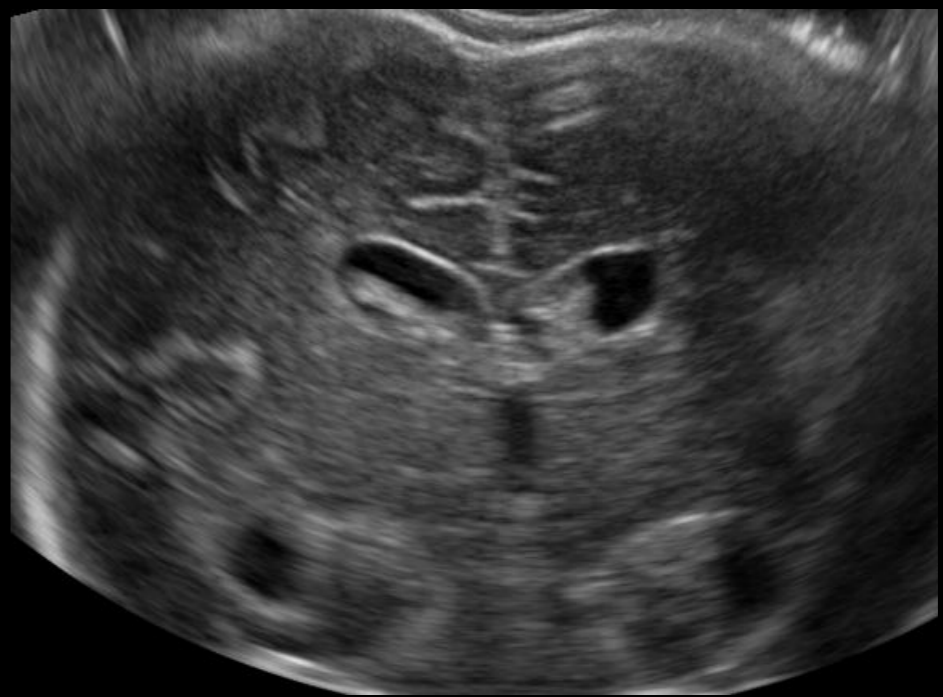
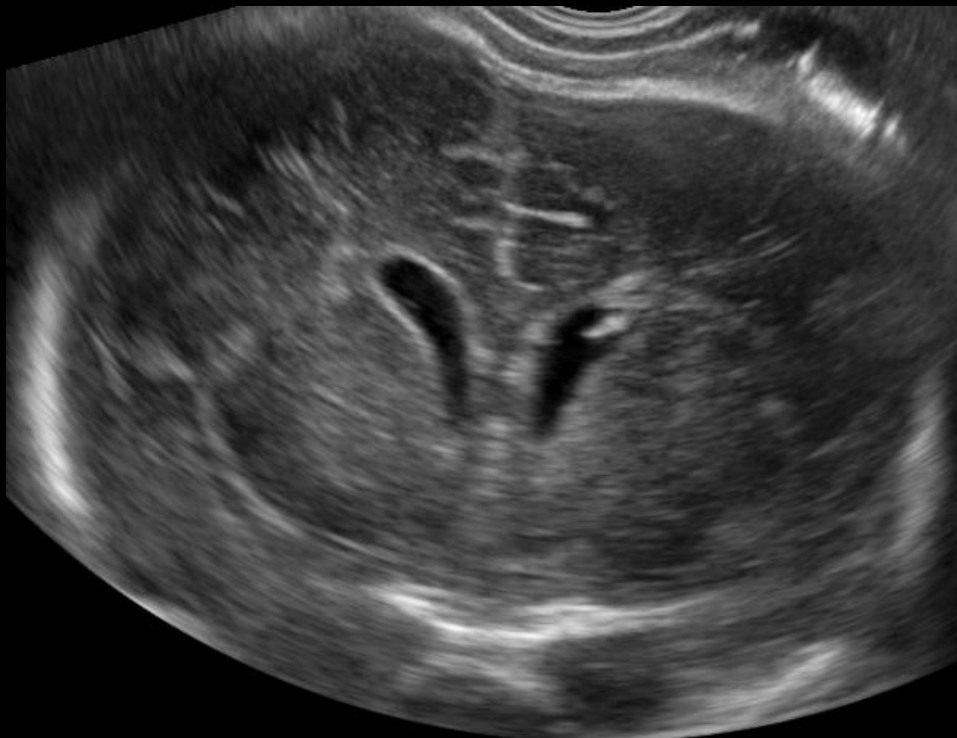
Nang vùng chẩm = CMV

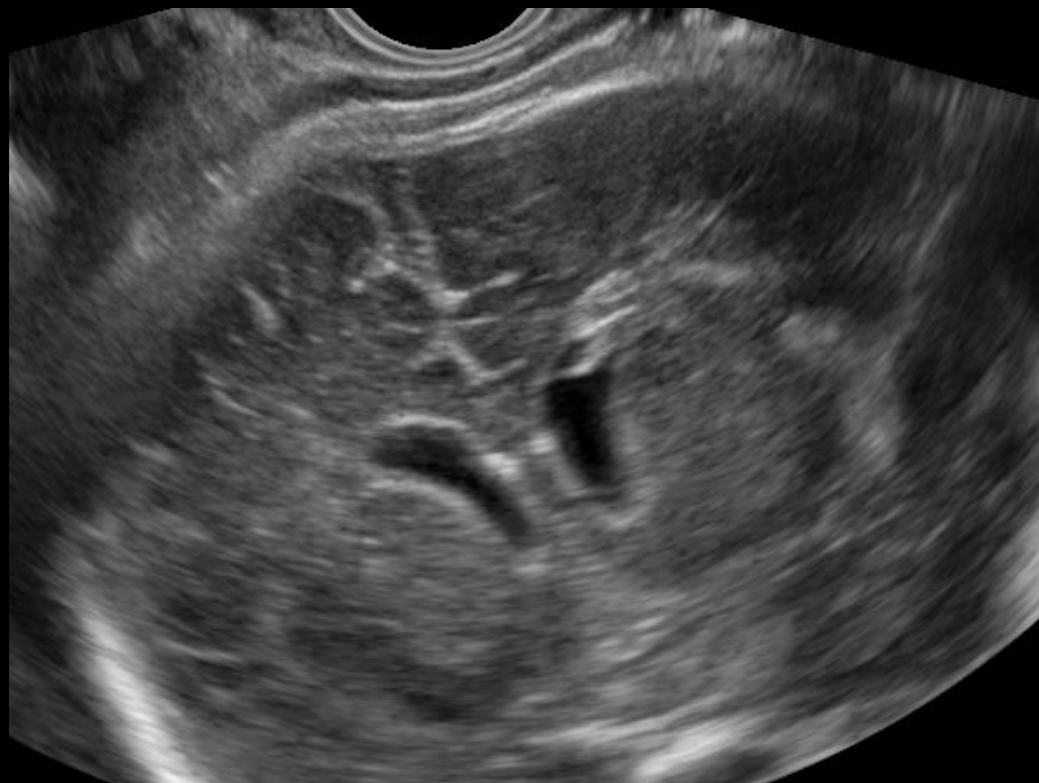
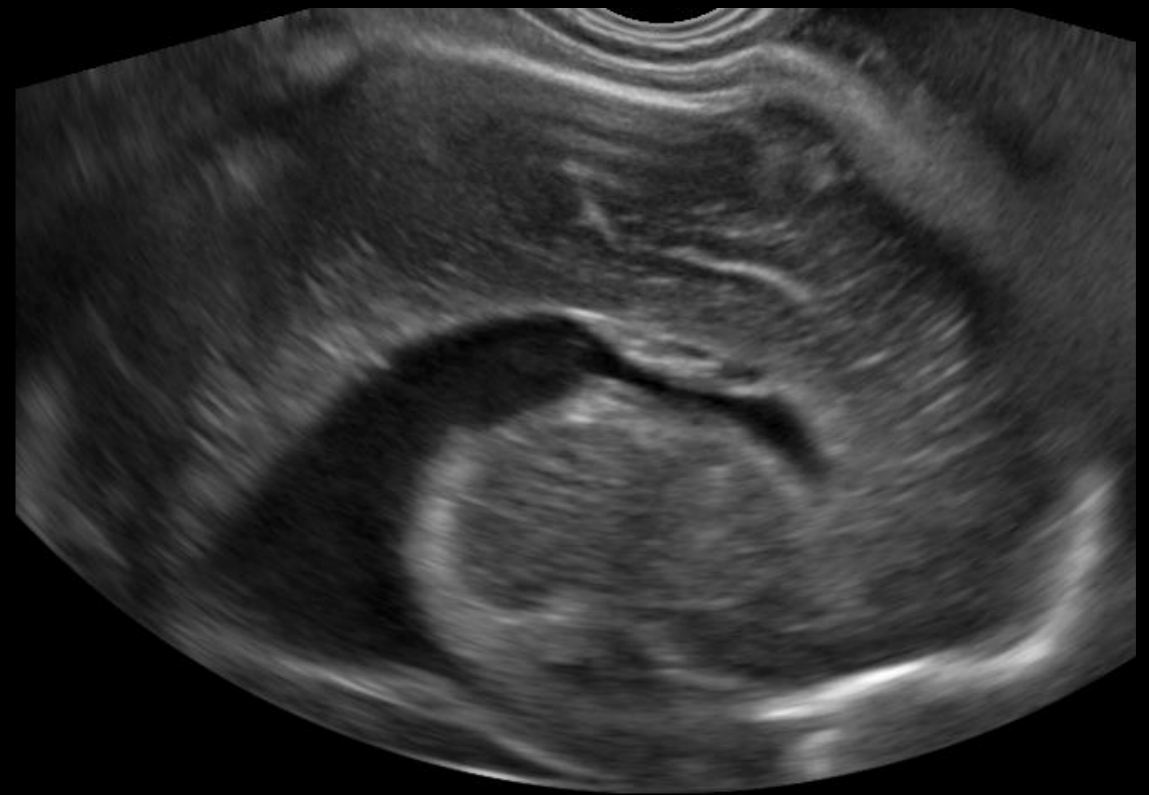




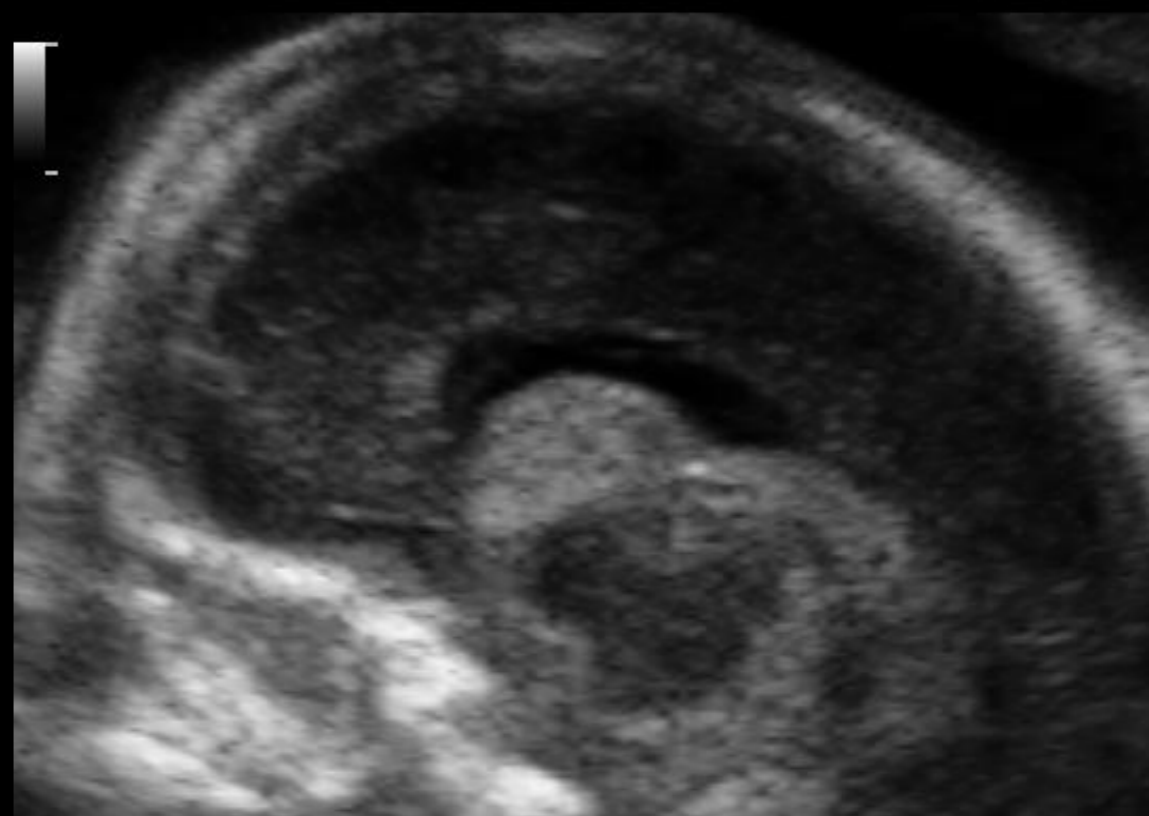
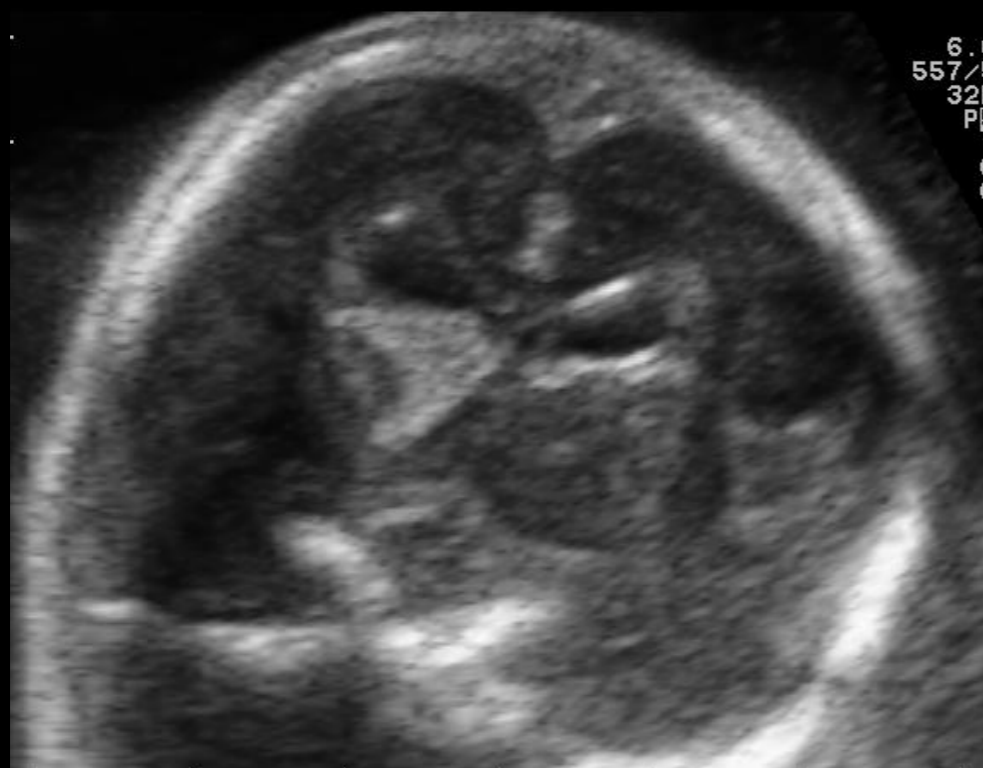
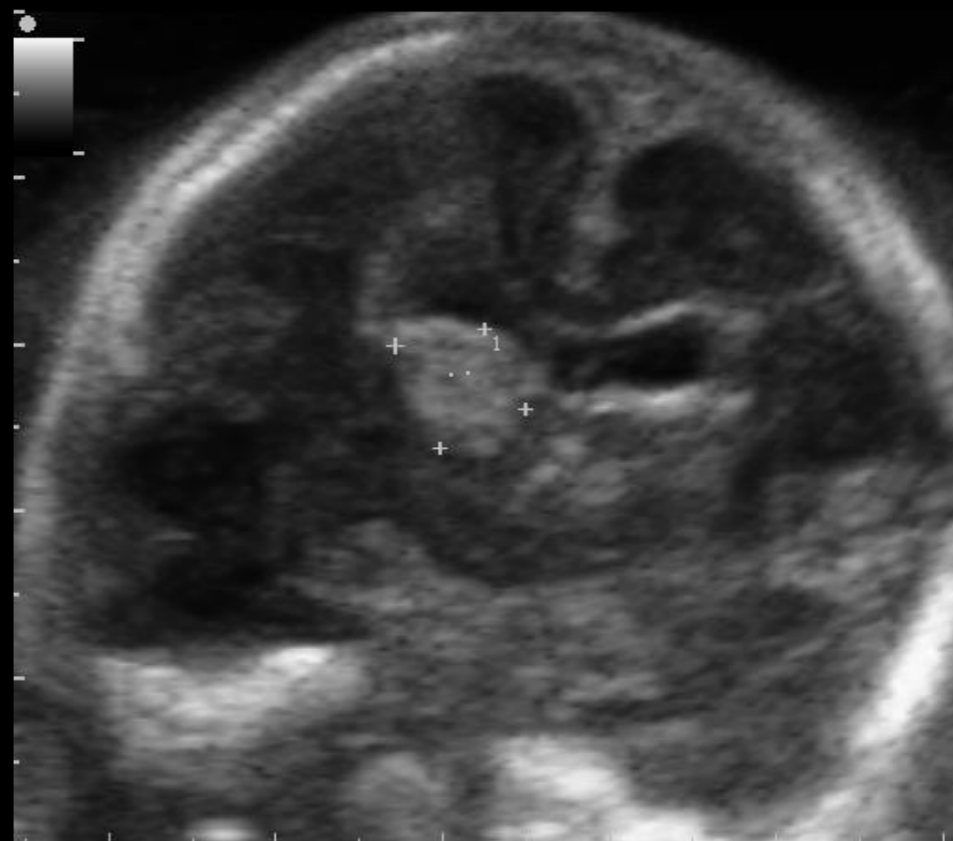
# Nguyên nhân mạch máu

- Dẫn não thất do tắc các lỗ Monroe hoặc tắc cống Sylvius
- Dẫn trên các não thất
- Tìm các tổn thương nhu mô não
- Bờ các não thất không đều



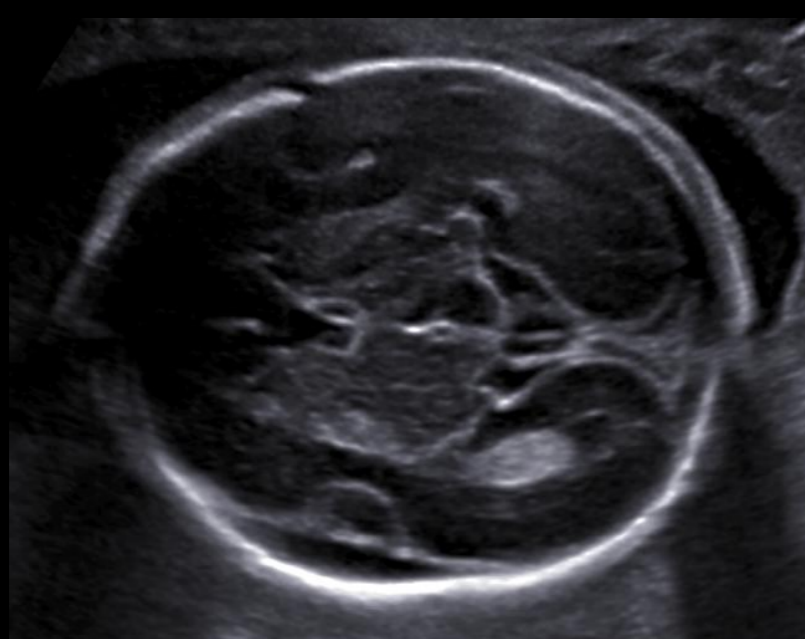






# Bất thường nếp, rãnh não

- Thành các não thất dày do ghép bất thường của các tế bào thần kinh
- Bất thường thung lũng Sylvius
- Xuất hiện muện của các rãnh não



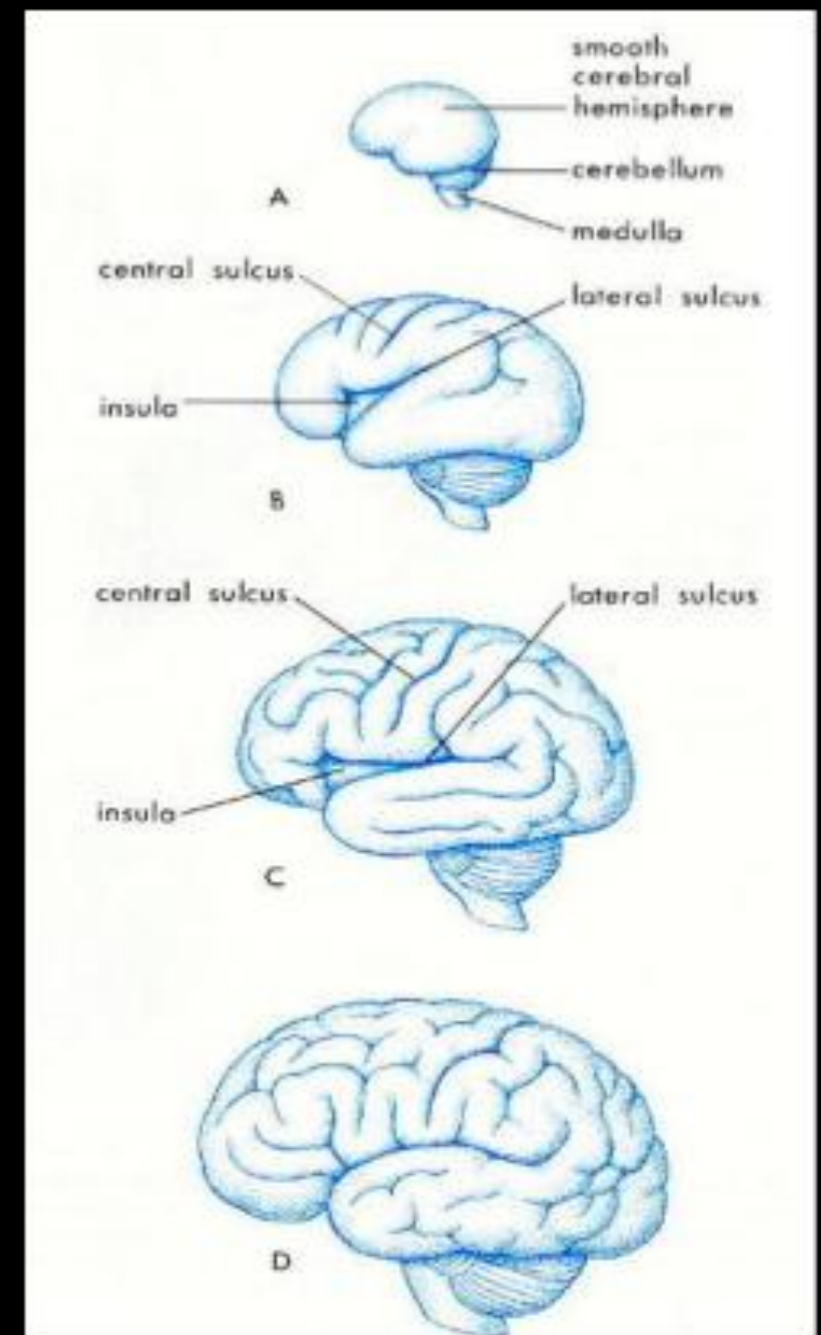
22 SA

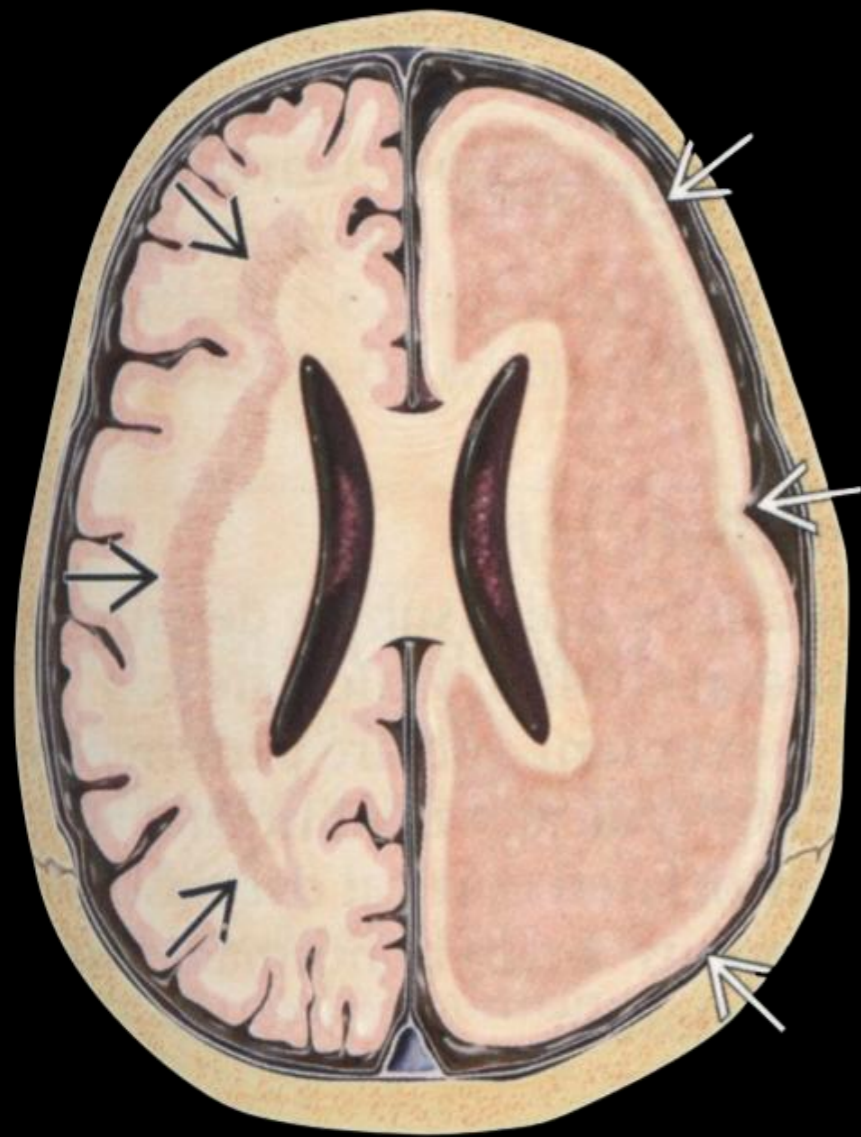


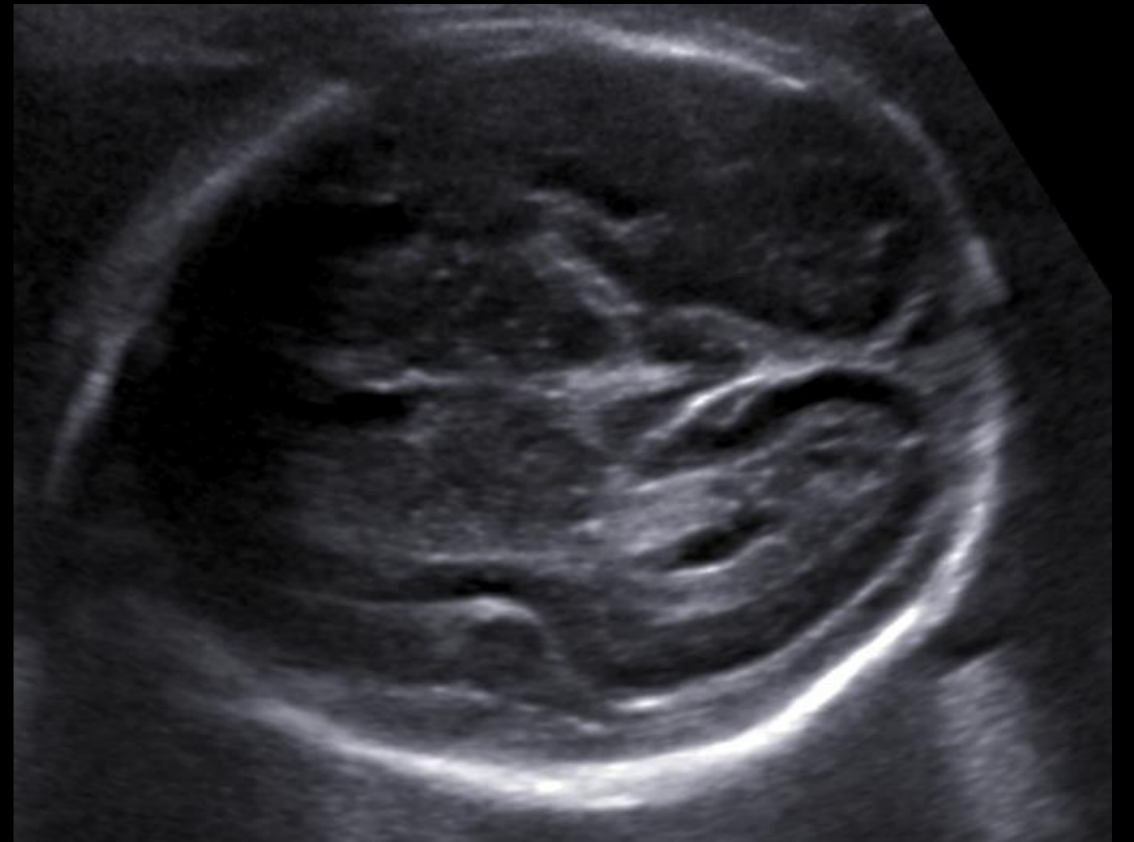
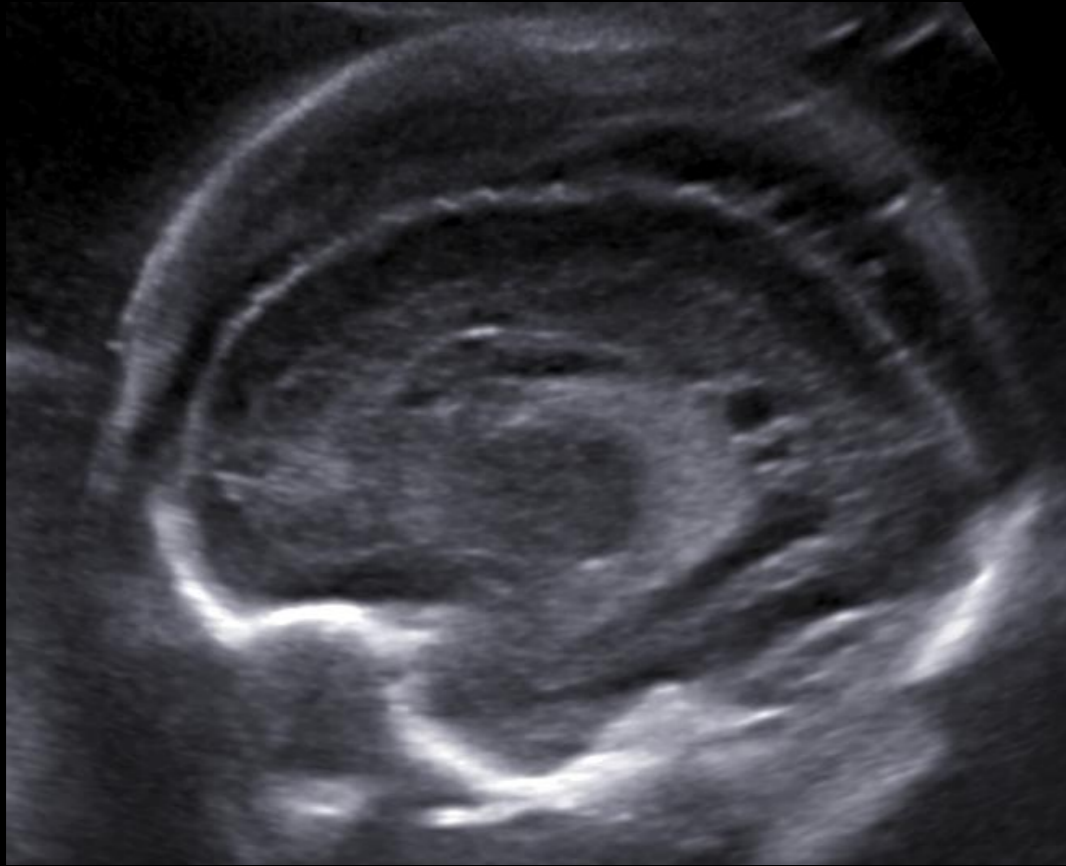
26 SA

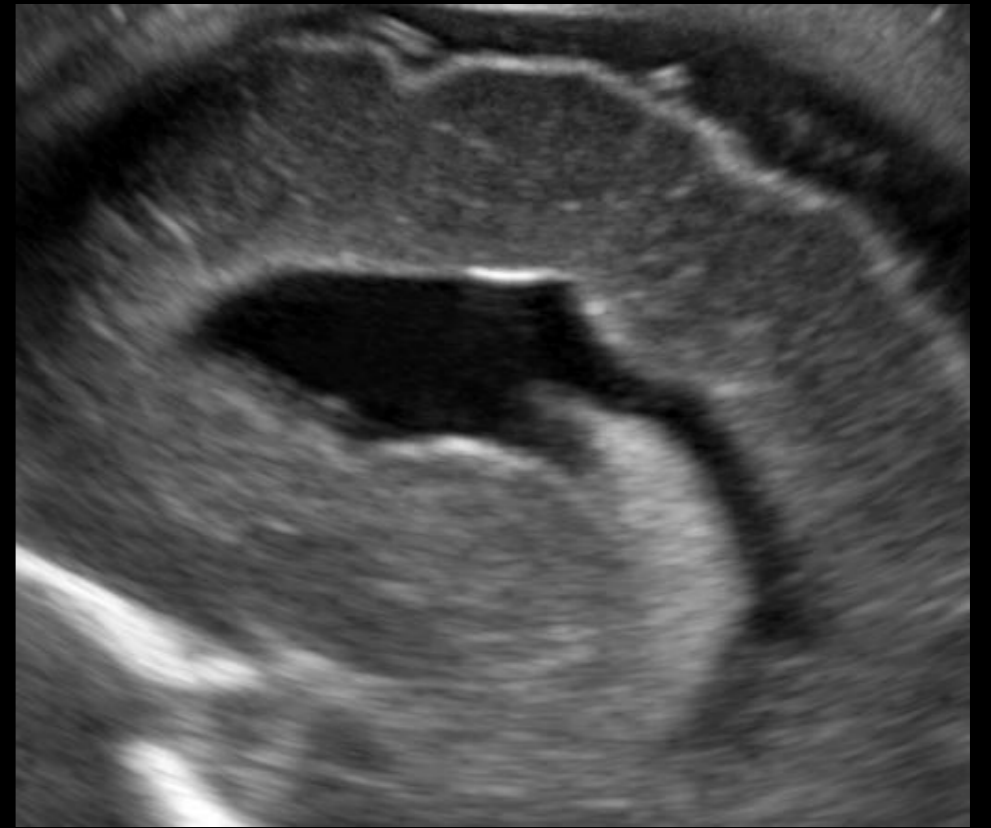
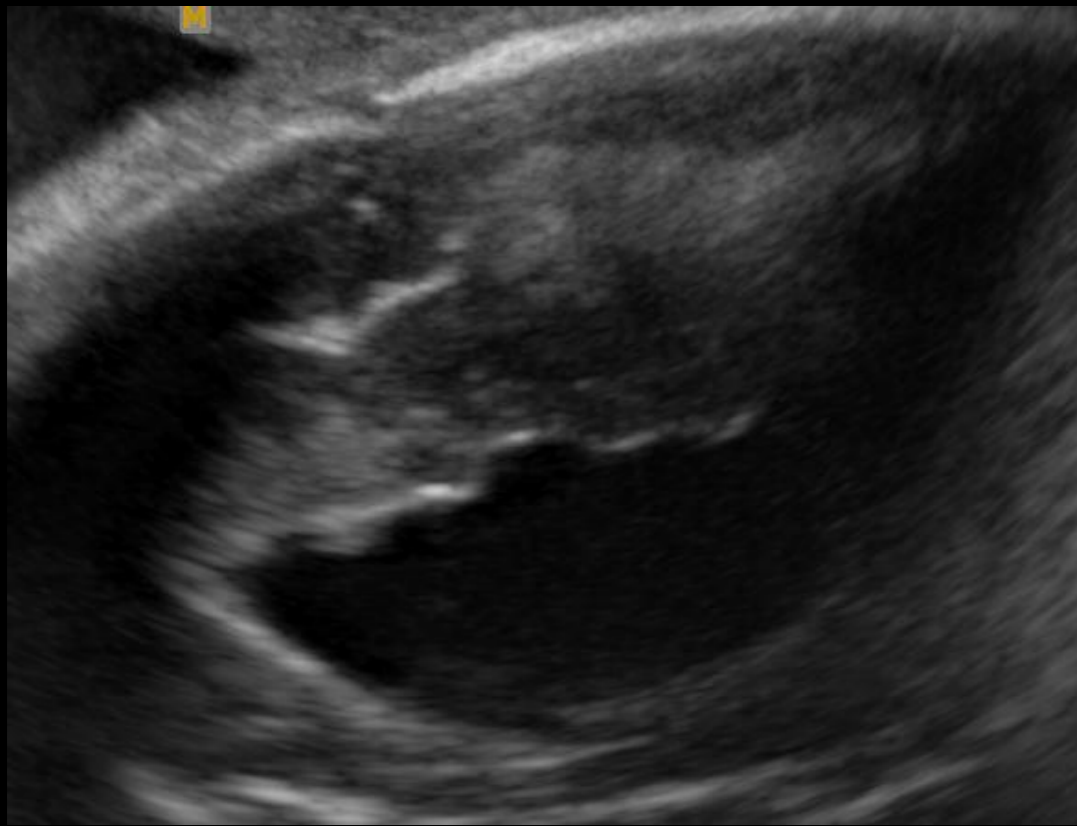


32 SA

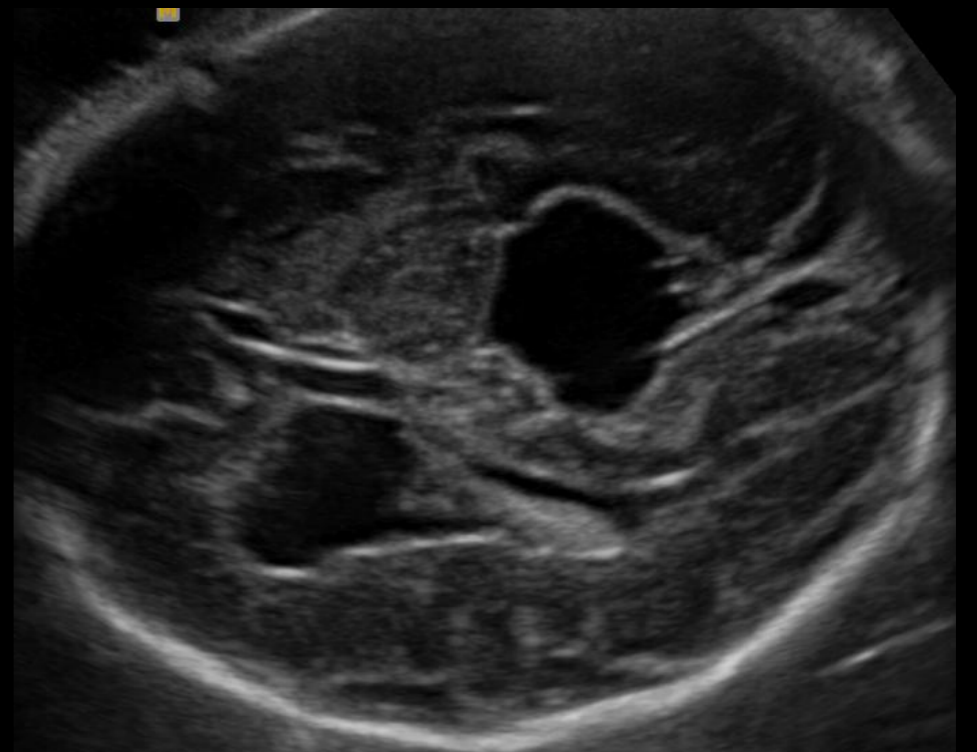








## Thần kinh lạc chỗ



# Kết luận

- Xét nghiệm tìm có nhiễm trùng
- Tìm bất thường cấu trúc
- IRM não
- Theo dõi sau sinh

